



THE ENTREPRENEURIAL FAMILY

UNIQUE PROGRAM FOR
PARENT-CHILD DUO

23rd May -25th May 2024





CONTENTS

BABSON COLLEGE	04
• FACTS & STATS	
DELLA LEADERS CLUB	06
• DLC GLOBAL CHAPTERS	
PROGRAM PARTNERS	08
MORE ABOUT THE ENTREPRENEURIAL FAMILY	09
• PROGRAM OVERVIEW AND HIGHLIGHTS	11
• PROGRAM BENEFITS	12
• PROGRAM CURRICULUM	13
WELCOME NOTE BY PROGRAM PARTNERS	14
• PROGRAM FACULTY	15
• DISTINGUISHED FACULTY AND GUEST SPEAKERS	16
• DLC DOMAIN EXPERTS & THOUGHT LEADERS	17
DLC GLOBAL SUMMIT HEAD QUARTERS	19
PARTICIPANT PROFILE AND FEES	20



BABSON COLLEGE

THE GLOBAL HUB OF ENTREPRENEURIAL EDUCATION

The world needs Entrepreneurial Leaders and Entrepreneurship Education was started at Babson more than a 100 years ago.

Babson College prepares and empowers entrepreneurial leaders who create, grow and steward sustainable economic and social value everywhere.

Babson Executive Education facilitates learning opportunities that prepare professionals to thrive in a challenging business climate.



Babson College Campus

FACTS AND STATS

BABSON COLLEGE IS THE PREMIER INSTITUTION FOR BUSINESS EDUCATION TAUGHT THROUGH AN ENTREPRENEURIAL LENS.

BABSON'S LOCATIONS IN WELLESLEY, BOSTON, AND MIAMI ATTRACT MORE THAN 2,500 UNDERGRADUATE AND OVER 1,000 GRADUATE STUDENTS, REPRESENTING OVER 100 COUNTRIES.

04

Year college with graduate program

#1

For Entrepreneurship
-U.S. News & World Report

2,847

Undergraduate students

1,237

Graduate students

11

Speciality centers and institutes and The Bertarelli Institute for Family Entrepreneurship (BIFE)

20

Miles from Boston, MA

98.7%

Of students were employed or attended graduate school within six months of graduation year.

44,000+

Alumni across 128 countries



DELLA LEADERS CLUB (DLC) THE WORLD'S 1ST BUSINESS PLATFORM

RECOGNISED BY FORBES NEW YORK – 12/06/2021



Founder Jimmy Mistry innovated Della Leaders Club - A global community of Entrepreneurs and Young Leaders created to build priceless relationships with top Leaders in any industry, any type of business, anywhere in the world. He believes DLC to be the catalyst to transform Leaders from **“A LIFE OF SUCCESS TO A LIFE OF SIGNIFICANCE”**

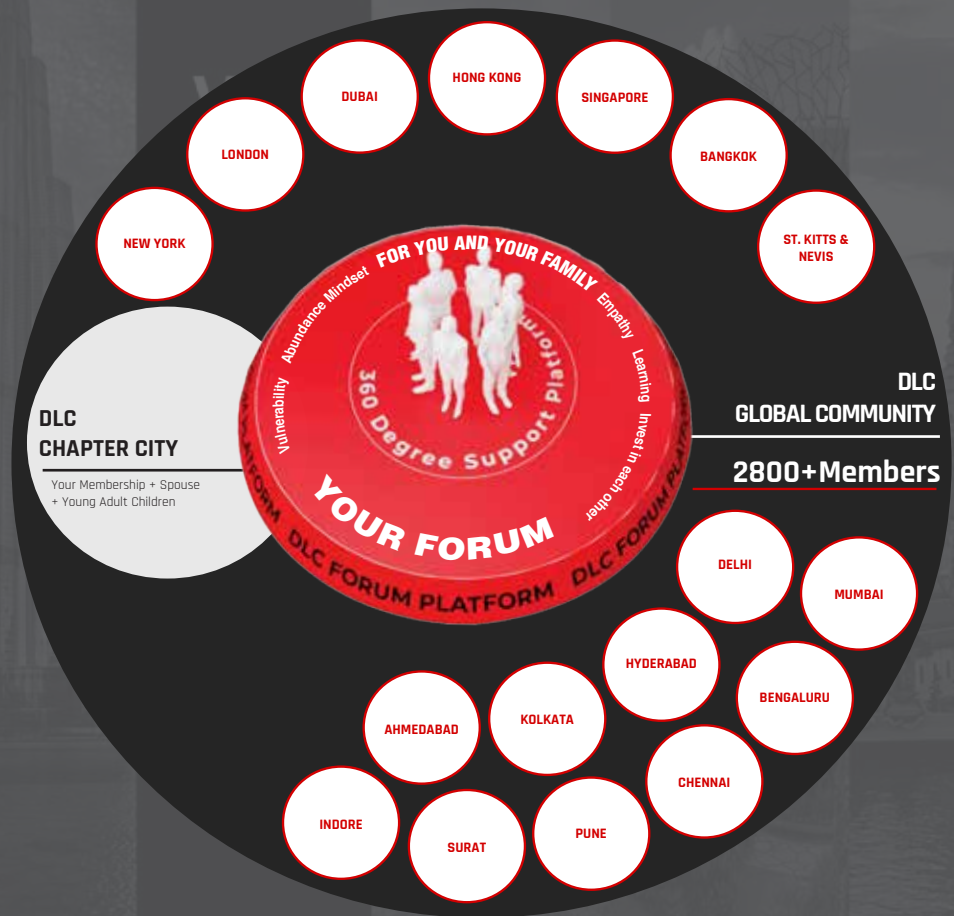
DLC has marked its presence across **7** countries, **56** nationalities, and **17** chapter cities globally with **2800+** members.

It's a 360 degree support platform to build priceless relationships globally with a mission to enrich the life of members by helping them evolve into empathetic & transformative leaders. DLC's biggest offering is Forum & Physical & Global events.

DLC GLOBAL CHAPTERS



DLC GLOBAL FAMILY
MEMBER COMMUNITY



PROGRAM PARTNERS

The **ASM Group of Institutes** has completed 40 years in the field of education. Through this period, ASM has persistently provided the corporate world with well-prepared professionals and has ranked amongst the top B-Schools in India. ASM has had excellent industry-institute interaction for more than 4 decades and tie-ups with leading organizations for cutting-edge certifications that enhance skills and boost employability.

Della Leaders Club is a global community of entrepreneurs and young leaders that provides access to peer-to-peer learning for its members via its proprietary DLC Channel, exclusive invites to DLC Events, and an opportunity to associate with member-curated programs designed to create meaningful learning opportunities from globally acclaimed industry thought leaders and experts.

MARKETING PARTNER

NextGenInnov8 is an innovation-driven company dedicated to facilitating and bringing out innovative solutions and entrepreneurship skills by teaching 21st century skills to the next generation and making them critical thinkers and develop their Entrepreneurial mindset.



MORE ABOUT THE ENTREPRENEURIAL FAMILY

— We invite you to learn more about
The Entrepreneurial Family
A unique program that highlights Succession
Planning for the Family Businesses

This is a multi-modular global management program built exclusively for business owners, entrepreneurs, and next generation of family business enterprises. The program is designed to enable these leaders to evolve their business models, craft strategies to counter disruptive threats, drive aggressive growth, and build resilient businesses or innovative new ventures.

As traditional family business models get transformed, disrupted or replaced due to innovation, digital technologies, and increased business volatility and uncertainty, there is an urgent need to change the status quo. Designed for family businesses, the program is highly interactive and immersive with hands on experiences and the application-oriented curriculum, as well as the pedagogy, ensures that the learning translates to real world impact across sectors and industries.



MORE ABOUT ENTREPRENEURIAL FAMILY



BONDING WITH YOUR CHILD

You will learn from world-renowned Babson College faculty and DLC Thought Leaders and collaborate and build strong networks with similar family business owners and entrepreneurial leaders and engage with thought leaders to understand how they converted opportunities to real-world successes. And to help guide your ambitions.

Babson College works with organizations and professionals around the world to turn ideas and challenges into opportunities. While cultivating an entrepreneurial mindset that is the basis for many of the world's most innovative businesses and leaders. The program is about more than theory; it's about action, and equipping you with the practical tools and strategies necessary to have an immediate impact on your family, organization or business.





YOU AND YOUR FAMILY WILL JOIN OTHER ENTREPRENEURIAL BUSINESS FAMILIES IN EXPERIENCES THAT INCLUDE:

- Developing and pitching a business idea using Babson's ET&A methodology.
- An interactive theme-based design thinking solution.
- Hearing from speakers who are experienced and established family entrepreneurs.
- Self-assessment of your working style and how it affects interpersonal interactions
- Conflict Management and its many attributes
- Discussions on family financial style, decision-making, and risk management.
- Offering potential Young Leaders, a perspective on business decisions and career paths





BENEFITS OF THIS ENTREPRENEURIAL FAMILY LEARNING AND LEADERSHIP EXPERIENCE

- **Allows you to work directly with your teenager as peers, offering insight into each other's strengths and capabilities**
- **Sparks new entrepreneurial ideas that your family might pursue together**
- **Encourages new lines of communication between you and your teenager**
- **Shows your child the power of entrepreneurship and how entrepreneurial thinking can be used to succeed in both business and in life**
- **Gives a better understanding of career pathways in business**
- **Helps highlighting succession Planning for the Family Businesses.**
- **Upon successful completion of this program, you will be awarded a certificate of participation from Babson and DLC which will highlight your commitment toward family entrepreneurial practices.**

PROGRAM CURRICULUM

THE PROGRAM WILL BE ORGANIZED AROUND FOUR KEY THEMES THAT WILL BE WOVEN THROUGHOUT THE PROGRAM:

01

MODULE

- Entrepreneurial Thought & Action™, Babson's approach to Entrepreneurship and Family Entrepreneurship
- Trust and Difficult Conversations
- Design Thinking and Observations
- Leadership Style Assessment
- Art of the Pitch
- Family Values

02

MODULE

- Family Business Management
- Dynamics of family business governance
- Business Plan Preparation
- Business Promotion
- Entrepreneurial Finance

03

MODULE

- Innovation and Creativity
- Social Entrepreneurship
- Technology innovation and sustainable enterprise
- Business Plan and Ethics
- Mergers and Acquisitions

04

MODULE

- Sickness and turnaround strategies
- Business Regulations
- Corporate Governance and Social Responsibility
- Finance and tax strategies for family businesses
- Cost and Management Accounting

05

MODULE

- Organizational Behaviour
- Managing Human Resource
- Finance Management
- New Product Development
- Enterprise Resource Building



WELCOME NOTE BY PROGRAM PARTNERS

Della Leaders Club in association with ASM welcomes you all to the Family Entrepreneurship Program being conducted in India at the DLC Global Summit Head Quarters in Lonavala by Babson College. This 4-day program is a game-changing revelation for entrepreneurs and future Young Leaders of family-run businesses which make up over 60% of all entrepreneurial endeavours in India today and will be conducted by faculty from the famed Babson College.

The Babson Family Entrepreneurship Program has the distinction of being rated as the world's #1 Entrepreneurship MBA program for the past 30 years. This is an exclusive, multi-modular global management program built exclusively for business owners, entrepreneurs, and next-generation family business enterprises. The program is designed to enable business family leaders to evolve their business models, craft strategies to counter disruptive threats, drive aggressive growth, and build resilient businesses through innovative new methods and ventures.

We hope you enjoy the deep learning associated with the program along with domain-specific talks and panel discussions by industry thought leadership from the DLC universe. We are delighted to welcome you and your family to join the top 'family business entrepreneurs' and their wards from across India.



BABSON PROGRAM FACULTY

MATT ALLEN

Associate Professor – Entrepreneurship
Ph.D. Cornell University, School of Industrial and Labor Relations
MBA, University of Notre Dame BA, University of Utah

Matt Allen, is the faculty director and an associate professor of entrepreneurship at Babson's Center for Engaged Learning and Teaching. Professor Allen's research is focused on entrepreneurship as it relates to family businesses and the preparation of the next generation of leaders. He works with family businesses of all sizes on issues of succession, governance, and effective management of interpersonal relationships in order to drive success across generations. "Professor Allen recently accepted a position in the Kellogg School of Management at Northwestern University leading their family business efforts."

PROGRAM FACULTY ONLINE

ERIK NOYES

Associate Professor

Ph.D. Boston University, Graduate School of Management MBA,
Whittemore School of Business, University of New Hampshire BA,
Brown University

An expert in innovation management and growth strategy, Professor Noyes teaches courses and international programs on entrepreneurial thinking, new venture creation, and business innovation. At Babson, he was awarded the Dean's Award for Teaching Excellence in the undergraduate program. Prior to joining Babson College, Dr. Noyes consulted for companies such as Nokia, BMW, Hewlett-Packard, New Balance, and Motorola to identify and evaluate new growth businesses in diverse areas such as mobile computing, healthcare, consumer products, automotive design, sensing systems, interactive media, and the Internet.



PROGRAM FACULTY ONLINE

DANNA GREENBERG

Professor

Ph.D. Boston College, Carroll School
of Management, BA, Wellesley College

Danna Greenberg is the Walter H. Carpenter Professor of Organizational Behavior. Danna teaches organizational behavior at the undergraduate, graduate, and executive level often in association with entrepreneurship and design thinking. Danna holds a B.A. in Psychology from Wellesley College, graduating magna cum laude with honors in the major, and a Ph.D. in Organizational Studies from Boston College graduating with first-year distinction. Danna's main area of research focuses on understanding the intersection between individuals' work and non-work lives as they move through their careers.



GUEST SPEAKERS



JIMMY MISTRY

Founder
Della Leaders Club
Designer
Hotelier
Community Builder



DR. SANDEEP PACHPANDE

Chairman
ASM Group of Institutes
Co-Founder NextGenInnov8
DLC Pune Chapter



FAHAD FORBES

Co-Chairman
Forbes Marshall
Chairman of the Board
Family Business Network International



RAMACHANDRAN GOPALAKRISHNAN

Chairman Advisory Board
InnoServ Group
Serial Entrepreneur



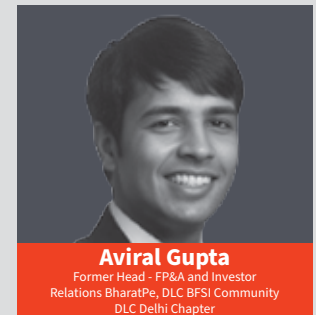
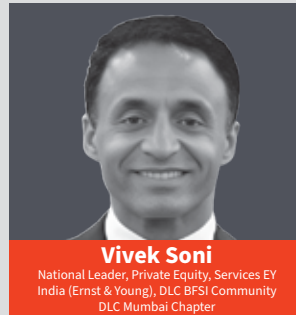
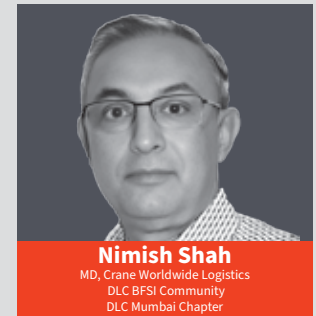
ADITYA PACHPANDE

C0-Founder
NextGenInnov8
Young Entrepreneur
Global Innovation & Design
Thinking Committee
DLC Pune Chapter

DLC DOMAIN EXPERTS AND THOUGHT LEADERS

PROPOSED PHYSICAL SPEAKERS

(Subject to availability)



PROPOSED GUEST SPEAKERS

(Subject to availability)



Rishi Chohan

Managing Director, Ernst & Young
DLC BFSI Community
DLC New York Chapter



Nayan Kisnadwala

Senior Executive, JBR Capital
DLC BFSI Community
DLC London Chapter



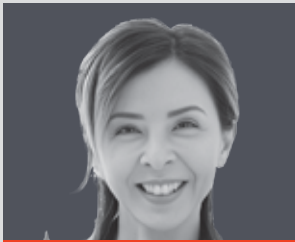
Uday Dholakia

Senior Partner, Global Consulting Ltd
DLC BFSI Community
DLC London Chapter



Deniz Misir

Founder, V22 International Advisory J.S.Co
DLC BFSI Community
DLC London Chapter



Lucy Chow

Founding Executive, Investment Committee,
World Business Angels Forum (WBAF), DLC BFSI
Community, DLC Dubai Chapter



Nasser Munjee

Chairman, Development Credit Bank Ltd.
(DCB Bank) DLC BFSI Community
DLC Dubai Chapter



Arun Tiwari

Chairman, IndusInd Bank
DLC BFSI Community
DLC Mumbai Chapter



Anesh Jagtiani

Commercial Director, Alpha Development
DLC BFSI Community
DLC Dubai Chapter



Prashant Tandon

CEO, Lighthouse Canton,
DLC BFSI Community
DLC Dubai Chapter



Anthony Moore

Founder, Chairman & CEO, Evrensel Capital
Partners, DLC BFSI Community
DLC Global Chapter, Istanbul



Siddhant Chopra

Director, Niraj Cements Structural's Ltd.
DLC BFSI Community
DLC London Chapter



DLC GLOBAL SUMMIT HEAD QUARTERS

The program will be conducted at our DLC Global Summit Headquarters in Lonavala. The Global Summit HQ stands on a 56-acre area with six 5-star resorts, 7 multi-cuisine restaurants, a state-of-the-art studio with the latest in cutting-edge technology, fully equipped media rooms, over 20 conferencing and banquet facilities, and the finest DLC resources, all of which create an environment that sets global benchmarks.



PARTICIPANT PROFILE AND FEES



This program is designed for high-potential family business entrepreneurs and emerging young leaders with several years of management experience, who direct specific functional areas of a dynamic enterprise. Global enterprises can rely on the program to prepare candidates for general management positions. Established entrepreneurs and other professionals can rely on the program to expand their ability to take their businesses to the next level of success.

The program is suitable for Members of the rising generation of a family enterprise including descendants and in-laws who may or may not be currently involved in managing the family business, family office, or family foundation.

It is particularly appropriate for executives raised in business families who are preparing for new leadership roles within their family business, family office for wealth management, or family foundation, or engaging in adjacent entrepreneurial activity.

Someone with demonstrated experience with business responsibilities and a career progression in a family business or entrepreneurial environment.

Someone with experience in leading teams and managing projects, products, and people.

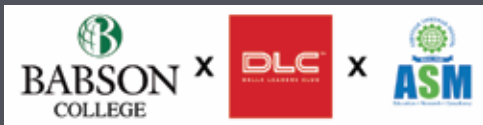
The program fee for the Entrepreneurial Program is USD 9,900 exclusive of all taxes. It covers teaching fees, all academic materials, all meals, accommodation and select other inclusions. The program fee does not include travel expenses, and any associated visa fees. It also does not cover any other expenses that are not expressly mentioned above.

THE GREATEST LEADER



IS NOT NECESSARILY
THE ONE WHO DOES THE
GREATEST THINGS. HE IS THE
ONE THAT GETS HIS CLOSEST
FAMILY AND COLLEAGUES TO
DO THE **GREATEST THINGS**





CONTACT

+91 9422009212
+91 9922991756

Email id- trainings@nextgeninnov8.com

LEARN MORE AT
www.nextgeninnov8.com/Babson